

OverviewDisplaysStorageSupportService



macOS Catalina

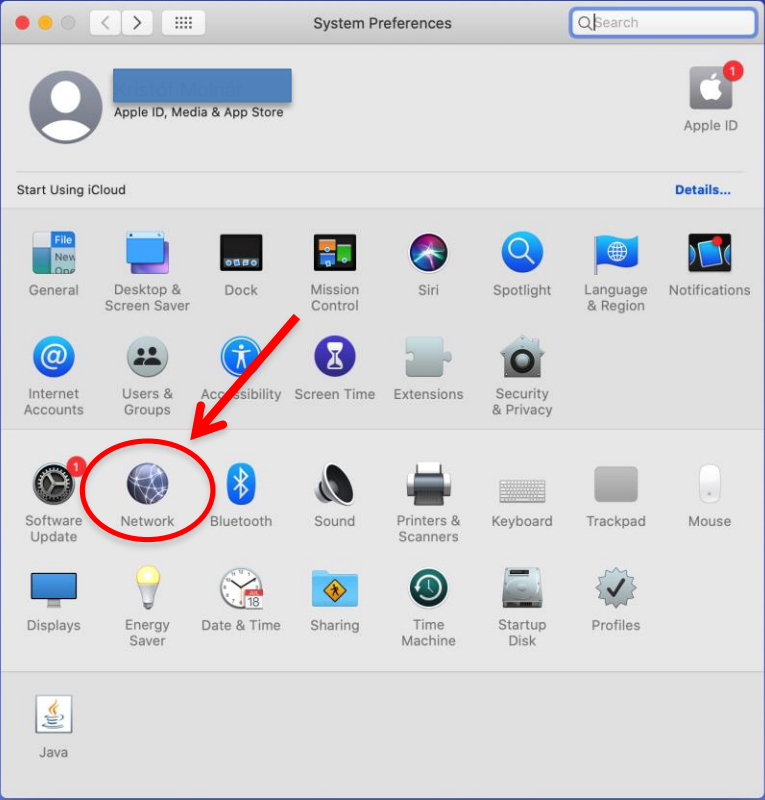
Version 10.15.5

Processor: 8-core Quad-Core Intel Core i9-9900T
Memory: 16 GB 2666 MHz LPDDR3
Storage: 512 GB SSD
Graphics: Intel Iris Graphics 6100 15W 4 GB
Serial Number: 001-2020-1000-0000

System Report...Software Update...

™ and © 1983-2020 Apple Inc. All Rights Reserved. License Agreement





Network


Location: Automatic


Wi-Fi
Connected


Bluetooth PAN
Not Connected


USB Ethernet
Not Connected

Thunde...It Bridge
Not Connected









Status: **Connected** Turn Wi-Fi Off

Wi-Fi is connected to Paris and has the IP address 192.168.43.66.

Network Name:

☒ Automatically join this network




☒ Ask to join Personal Hotspots

☐ Ask to join new networks

Known networks will be joined automatically. If no known networks are available, you will have to manually select a network.

802.1X: SSID eduoam Connect

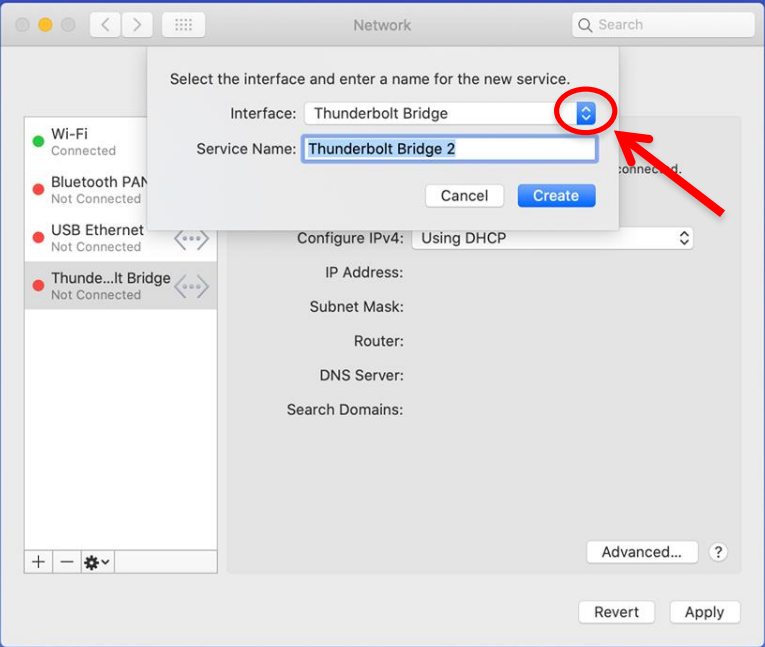
☒ Show Wi-Fi status in menu bar Advanced... ?

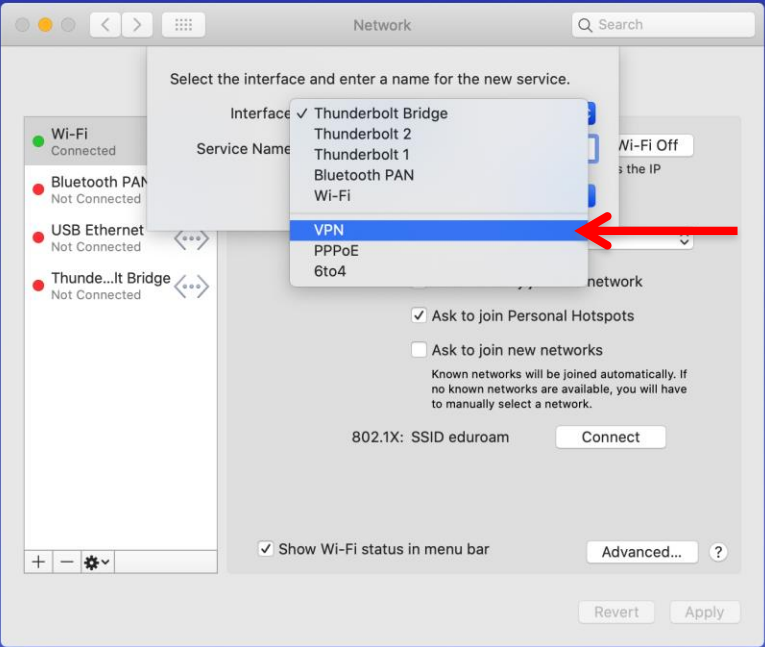
  

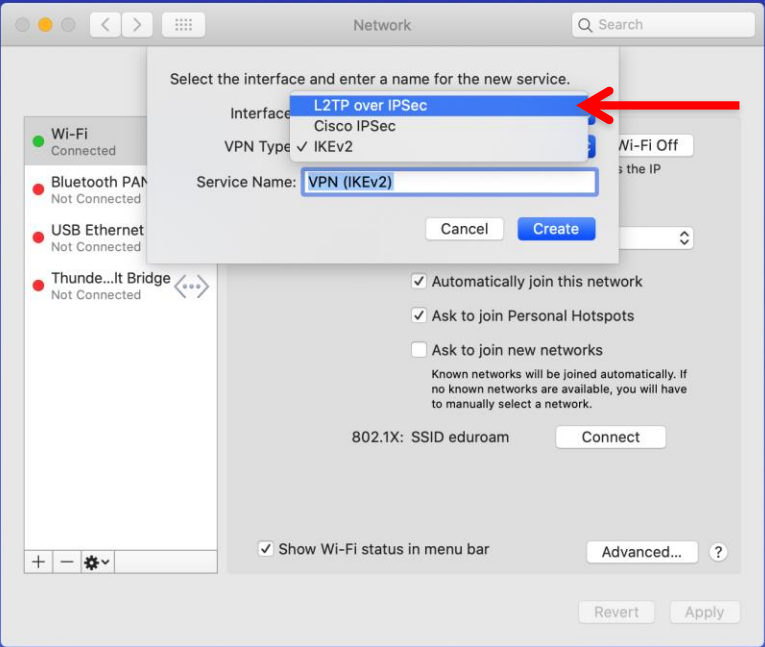
Create a new service

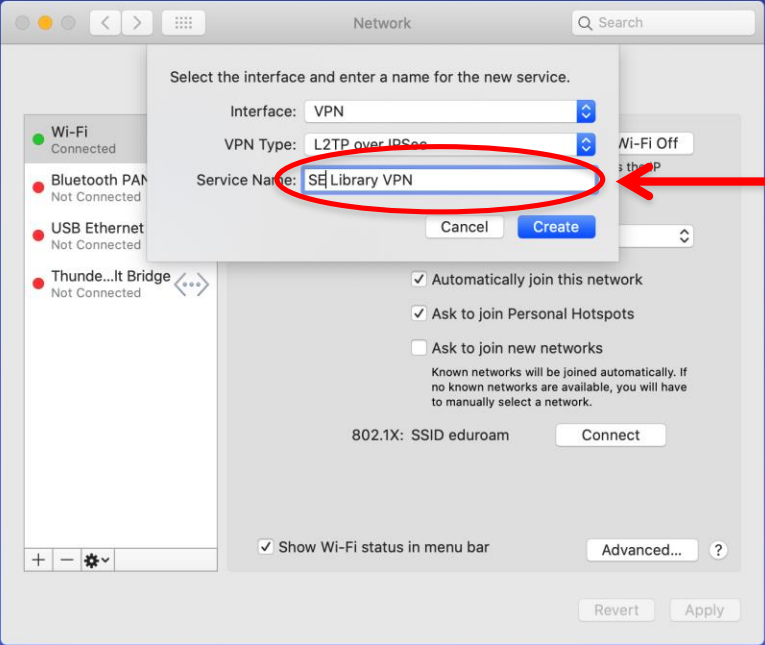
Revert Apply

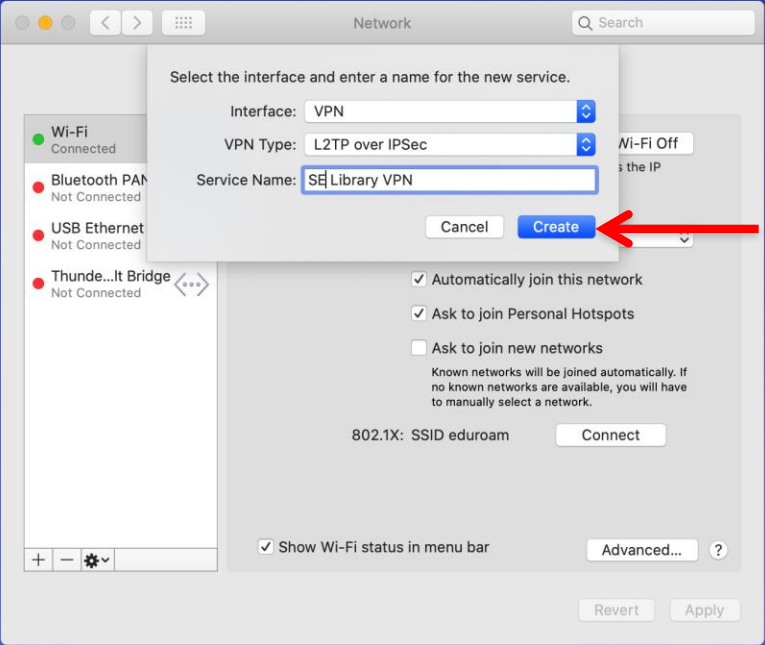












Network

Location: Automatic

Wi-Fi
Connected

Bluetooth PAN
Not Connected

USB Ethernet
Not Connected

Thunde...It Bridge
Not Connected

SE Library VPN
Not Configured

Status: Not Configured

Configuration: Default

Server Address: 193.6.208.35

Account Name: Required

Authentication Settings...

Connect

Show VPN status in menu bar

Advanced... ?

Revert

Apply



★ MAIN PAGE

News

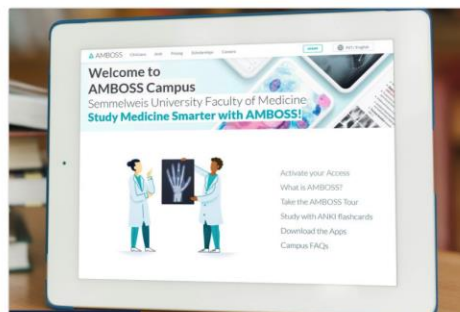
TOVÁBBI HÍREK →



2020. 09.02.

Using library - Updated regulary

The library is open again to a limited number of readers. Services are available. Please click here for details.



2020. 08.26.

AMBOSS database is now available to university students

The AMBOSS English -and German language database is now available for our university students who learn in the English or German program. AMBOSS is an interactive library with a Question Bank with clinical case-based questions.



2020. 09.10.

THE BIOMEDICAL AND LIFE SCIENCES COLLECTION'S NEW SEMINARS

The following new seminars have been released lately on the Hepatitis C, PI 3-kinases, diabetes, ASD, rabies, colon, DM and CKD, SARS-CoV-2, Nanotechnologies.



Quick access



Knowledge Base



Favorites



Search in our sources



Login

Email address or Neptun ID

Password

Login

[EduID login](#)

More informations about your access

Registration

Attention! You should not register if you have Neptun access, you can login with that

E-mail address:

Name:

Password:

Password confirm:

Registration

[Forgot password recovery](#)



★ MAIN PAGE

News

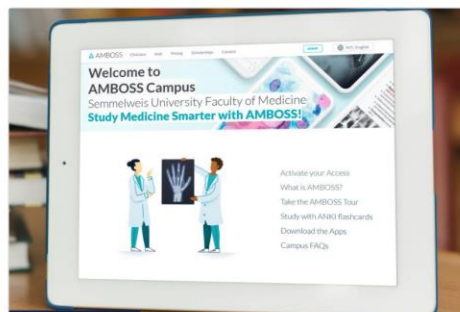
TOVÁBBI HÍREK →



2020. 09.02.

Using library - Updated regulary

The library is open again to a limited number of readers. Services are available. Please click here for details.



2020. 08.26.

AMBOSS database is now available to university students

The AMBOSS English -and German language database is now available for our university students who learn in the English or German program. AMBOSS is an interactive library with a Question Bank with clinical case-based questions.



2020. 09.10.

THE BIOMEDICAL AND LIFE SCIENCES COLLECTION'S NEW SEMINARS

The following new seminars have been released lately on the Hepatitis C, PI 3-kinases, diabetes, ASD, rabies, colon, DM and CKD, SARS-CoV-2, Nanotechnologies.



Quick access



Knowledge Base



Favorites



 **VPN ACCESS****COVID-19 Research information**

Catalogs

New information sources (textbooks, databases) temporary available

Databases

Journals catalogue

Online book catalogue

Catalogue

Useful Links

Favorites

Knowledge base

Software, applications

EndNote

VPN access

Trial databases

Passwords

Publisher copyright policies & self-archiving

Digitized documents

Almanacs and yearbooks of the university

To access the online resources (databases, journals, etc.) of the Central Library, a VPN (Virtual Private Network) can be used.

If you are an employee of the University, and you have an account in the Groupwise email system, then you can use this, to connect to the VPN service. The description of the service and setup guides can be found on the University's IT department page: <http://semmelweis.hu/informatika/egyeb-szolgalatasok/eroforrasok-tavoli-elerese/>

If you are a student of the the University, you can use the VPN service managed by the library. To access it, please check out the Services menu, or click on this link: [VPN access for students](#)



GO TO THE TOP OF PAGE



★ VPN ACCESS FOR STUDENTS

For visitors

- Is there free seats at the Library
- Report building related problems
- Registration
- Internet Access
- Loan
- Reservation
- Information Leaflets

Remote access

VPN access for students

Library Verification

- General policy
- PhD Library Verification
- Appointments
- Habilitations

Education

- Education App
- Courses
- Courses for PhD students

Interlibrary Loan

INFORMATION

REGISTER

The library VPN is currently not started in your computer. (IP:37.76.18.152)

The student VPN access can be used to open the databases and journals of the university from home. This access requires a Semmelweis University Neptun code or SEKA ID. To use this access, please log in to the webpage with your Neptun code / SEKA ID, then select the Request Access tab.

You can read how to setup the VPN access on the below link:
[More information...](#)

Attention!

If you are an employee of Semmelweis University, please use the [VPN service](#) of IT department

Attention! The newest version of MAC OSX and IOS doesn't support PPTP protocol anymore, please use L2TP/IPsec instead, and connect to the 193.6.208.35 server. The pre shared key needed for this can be found in the [Request Access](#) tab also.



GO TO THE TOP OF PAGE





★ VPN ACCESS FOR STUDENTS

For visitors

- Is there free seats at the Library
- Report building related problems
- Registration
- Internet Access
- Loan
- Reservation
- Information Leaflets

Remote access

VPN access for students

Library Verification

- General policy
- PhD Library Verification
- Appointments
- Habilitations

Education

- Education App
- Courses
- Courses for PhD students

Interlibrary Loan

Poster printing

INFORMATION

REGISTER

You are entitled to use the student VPN access.

The details of your VPN access (attention! lower and upper case characters are different in the username and password):

Username:

Password:

VPN server:

193.6.208.38 (PPTP protocol (Only for Windows and Android devices))

193.6.208.35 (L2TP/IPsec protocol (For all devices))

Valid until: 2020-11-18 14:04:34

Status: Not logged in

If you are using L2TP/IPsec protocol to connect our VPN server, the following informations are also needed to setup your connection:

L2TP/IPsec preshared key:

ZehRjylsE258rip5JnwOahe36ZEdfKnpE9wiA5UWdFHeutrHzoeTOtwDRZEjsk3

Click here to change your VPN password:

[Change password](#)



GO TO THE TOP OF PAGE

Network

Location: Automatic

Wi-Fi
Connected

Bluetooth PAN
Not Connected

USB Ethernet
Not Connected

Thunde...It Bridge
Not Connected

SE Library VPN
Not Configured

Status: Not Configured

Configuration: Default

Server Address: 193.6.208.25

Account Name: AA11BB22

Authentication Settings...

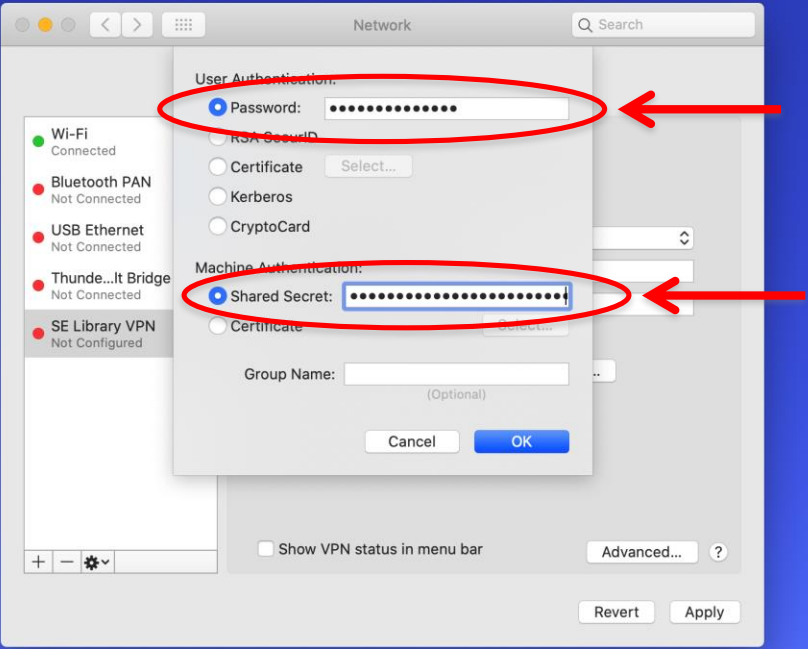
Connect

Show VPN status in menu bar

Advanced... ?

Revert

Apply



Network

Search

Location: Automatic

Wi-Fi
Connected

Bluetooth PAN
Not Connected

USB Ethernet
Not Connected

Thunde...It Bridge
Not Connected

SE Library VPN
Not Configured

+

-

⚙

▼

Status: Not Configured

Configuration: Default

Server Address: 193.6.208.35

Account Name: AA11BB22

Authentication Settings...

Connect

☐ Show VPN status in menu bar

Advanced...

Revert

Apply



